



Queens Wharf, 2 Crisp Road,  
Hammersmith, W6

£925 Per Week,

NAPIER WATT

T: 0207 935 0011  
E: [enquiries@napierwatt.co.uk](mailto:enquiries@napierwatt.co.uk)  
W: [napierwatt.co.uk](http://napierwatt.co.uk)

35 Berkeley Square, Mayfair, London, W1J 5BF











## Description

Stylish two-bedroom apartment in this modern block with two terraces. Set on the third floor (with lift), the apartment boasts wooden flooring, plenty of natural light and outside space. Laid out over 1,076sq ft, the apartment consists of a spacious living room with space for dining, open plan kitchen that leads through to one of the balconies, family bathroom, storage cupboard, large master bedroom with a freestanding bath tub, and separate shower, a second double bedroom and another balcony, which both bedrooms have direct access to. This riverside development further benefit from a 24-hour concierge service, a communal roof terrace, cycle storage and a plethora of cafés restaurants and shops in the area. Available, furnished.

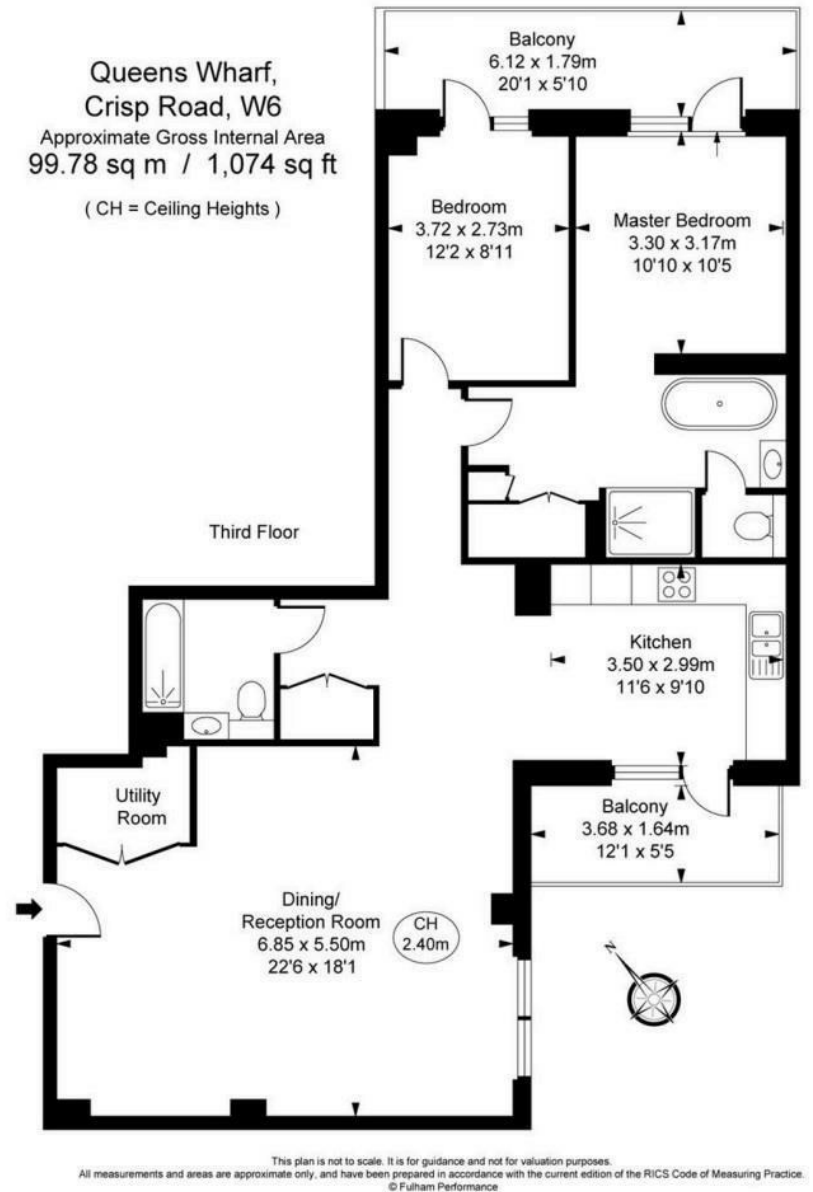
2 Bedrooms : 2 Bathrooms : 2 Terraces : 24-Hour Concierge : Lift : Communal Roof Terrace : Hammersmith & Fulham Council Tax Band F : EPC Rating B

## Key Features

- PASSENGER LIFT
- COMMUNAL ROOF TERRACE
- RIVERSIDE DEVELOPMENT
- 24-HOUR CONCIERGE
- TWO PRIVATE TERRACES
- MODERN FINISH

## Terms

Fees & Charges: Tenancies exceeding £100,000 Per annum £480 inc VAT, Tenancies where a company is a tenant £480 Inc VAT.



IMPORTANT: We would inform prospective purchasers that these sales particulars have been prepared as a general guide only. A detailed survey has not been carried out, nor the services, appliances and fittings tested. Room sizes should not be relied upon for furnishing purposes and are approximate. If floor plans are included, they are for guidance only and illustration purposes only and may not be to scale. If there are any important matters likely to affect your decision to buy, please contact us before viewing the property.